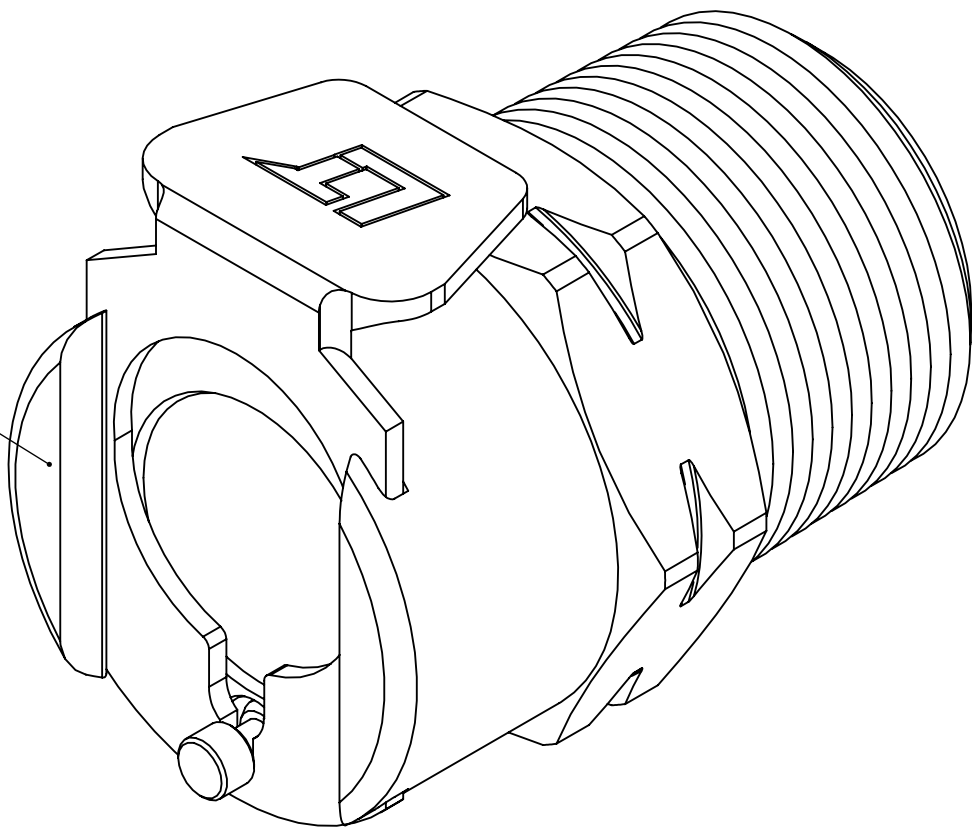
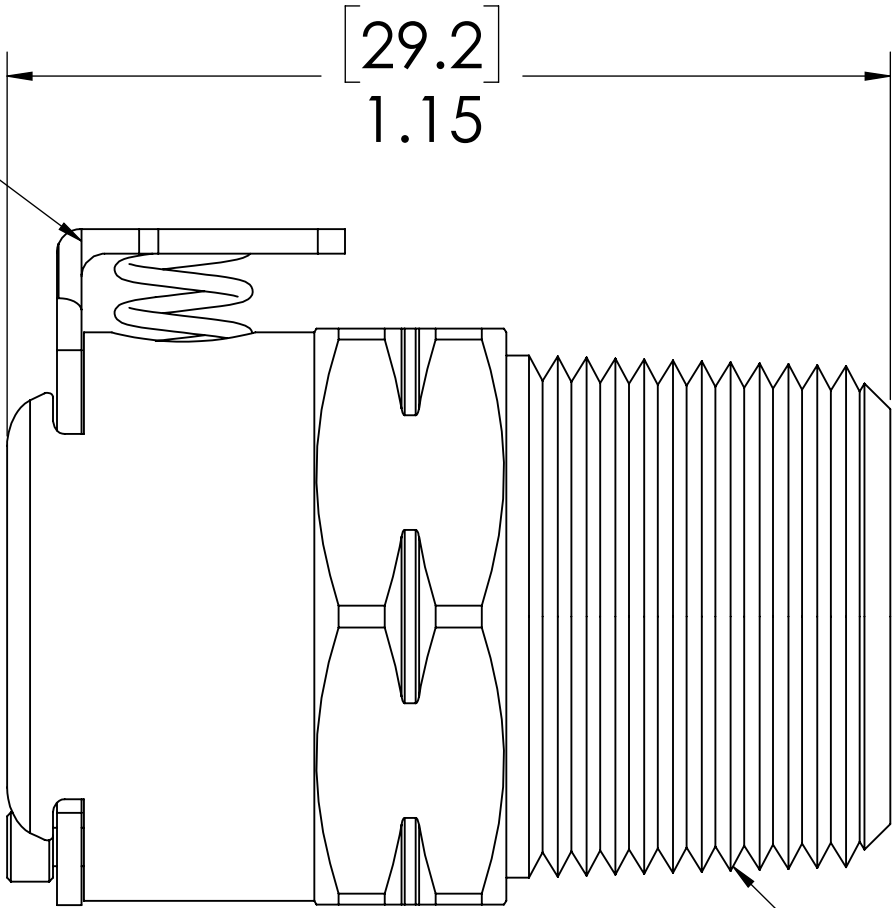


REVISIONS						
SHEET	ZONE	REV.	ECO	DESCRIPTION	DATE	APPROVED
1	ALL	A	50242	PIN, PIN SPRING & 2017 FORMAT UPDATE	10/18/2018	HRC

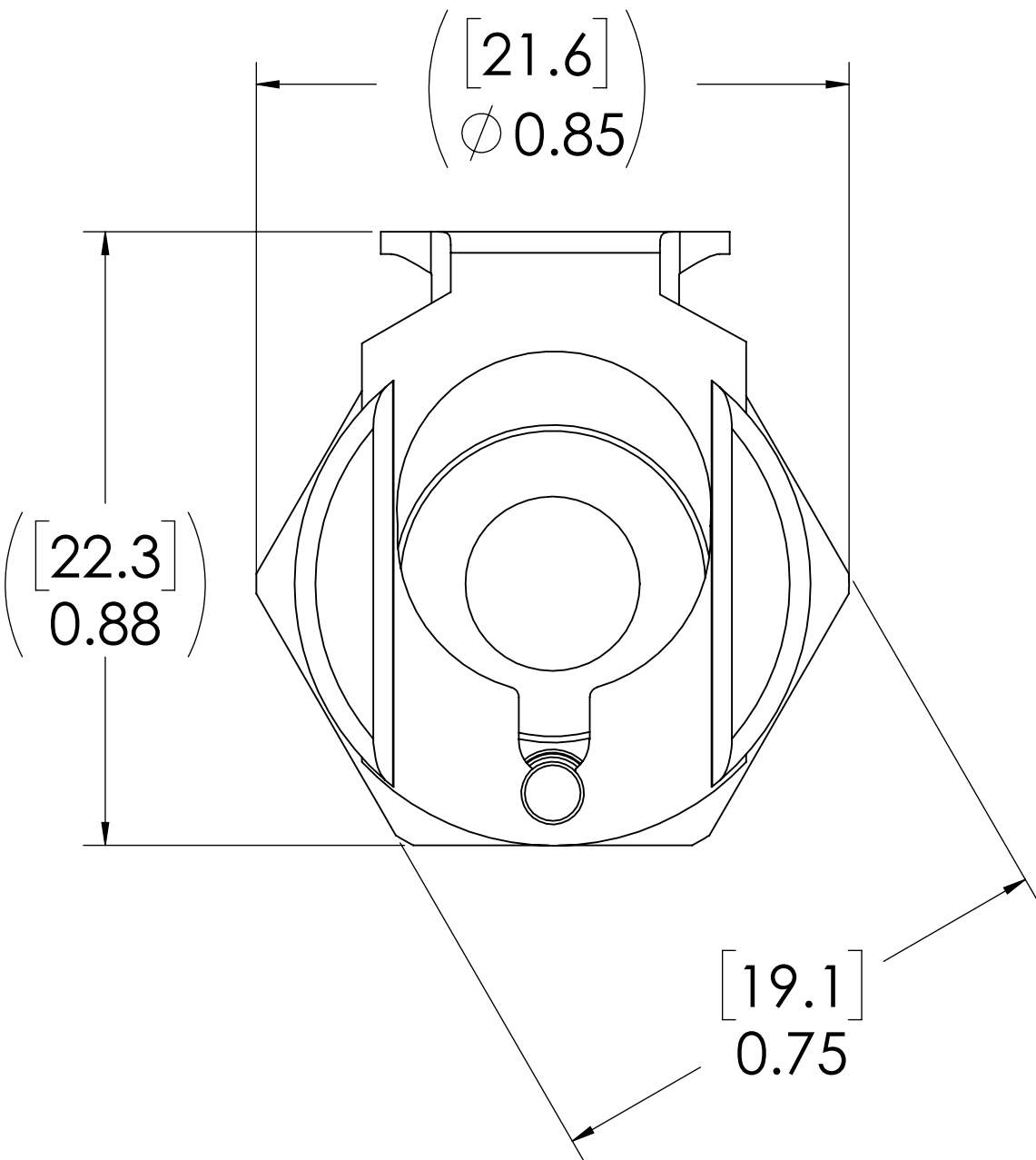
SOCKET
(BRASS, NICKEL &
CHROME PLATED)



LATCH HARDWARE
(STAINLESS STEEL)




3/8 BSPT
(PIPE THREAD)



NOTES:

- MATERIAL: BRASS
- FINISH: CHROME

FOR REFERENCE ONLY

UNLESS OTHERWISE SPECIFIED:		NAME		DATE		 LINKTECH™ <small>DRINK. ENGINEERING INTELLIGENCE.™</small>	
DIMENSIONS ARE IN INCHES TOLERANCES: FRACTIONAL ±1/32 ANGULAR: MACH ±0.5 BEND ±2 ONE PLACE DECIMAL ±0.1 TWO PLACE DECIMAL ±0.01 THREE PLACE DECIMAL ±0.005 TWO PLACE DUAL (mm) [±0.12]	DRAWN	LDM	1/11/2018		PART NO. 40CB-S1-06BSPT	DESCRIPTION: LinkTech 40CB Series Male Thread Female, Non-valved, 3/8" BSPT, Chrome Brass	
	CHECKED	HRC	1/11/2018				
	ENG APPR.	HRC	10/18/18				
	MFG APPR.	BDB	10/18/18				
PROPRIETARY AND CONFIDENTIAL	PRODUCTION	LS	10/18/18		SIZE	DWG. NO. C40CB400246	REV A
THE INFORMATION CONTAINED IN THIS DRAWING IS THE SOLE PROPERTY OF LINKTECH LLC. ANY REPRODUCTION OR DISCLOSURE IN PART OR AS A WHOLE WITHOUT THE WRITTEN PERMISSION OF LINKTECH LLC IS STRICTLY PROHIBITED.	COMMENTS:			SCALE: NTS			
						SHEET 1 OF 1	